

# EFX MK-V

## Audio Controller

***EFX MK-V EDITOR  
OWNER'S MANUAL***

**Musicom**   
*Preserving Your Tone, Pure and Dynamic*

## Download and Unpack the EFX MK-V Editor

---

- Download and unpack the Zip file.

[www.musicomlab.com/efxmk-v.htm](http://www.musicomlab.com/efxmk-v.htm)

### Note

- The EFX MK-V Editor is a standalone software. No installation is not required.
- To use the EFX MK-V Editor, the MK-V firmware must be **V2.00 or higher**.  
If the MK-V firmware is lower than V2.00, you need to update to the latest firmware.  
Refer to the '**Firmware Update**' on the Page 6.

## Connect MIDI Interface

---

- Connect your computer and MIDI interface.
- Connect the MIDI interface's MIDI IN to the EFX MK-V's MIDI OUT/THRU and the MIDI interface's MIDI OUT to the EFX MK-V's MIDI IN

### Note

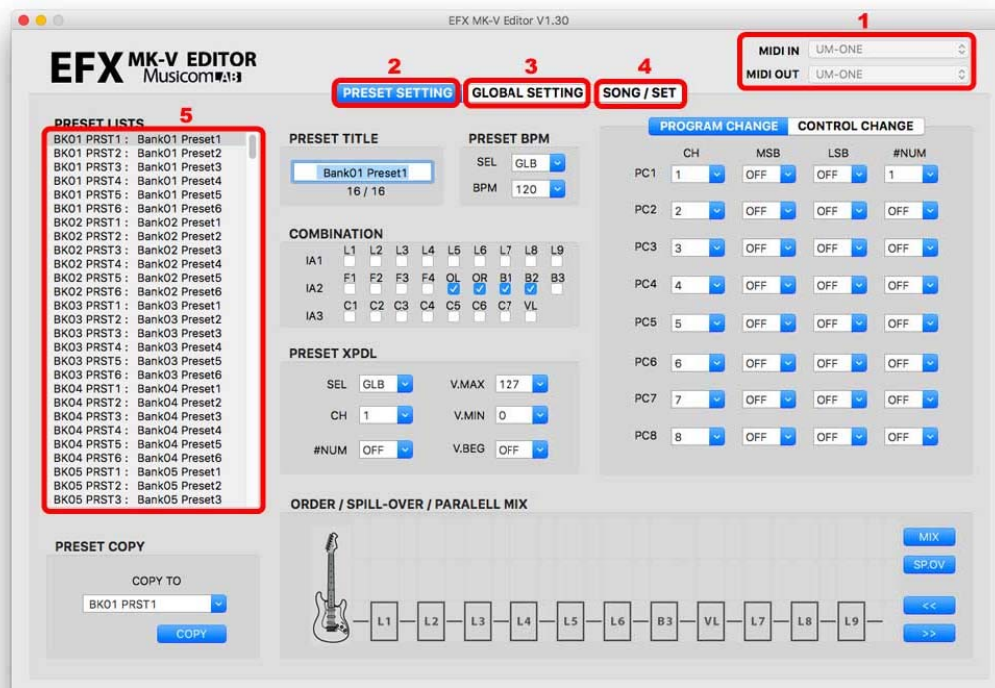
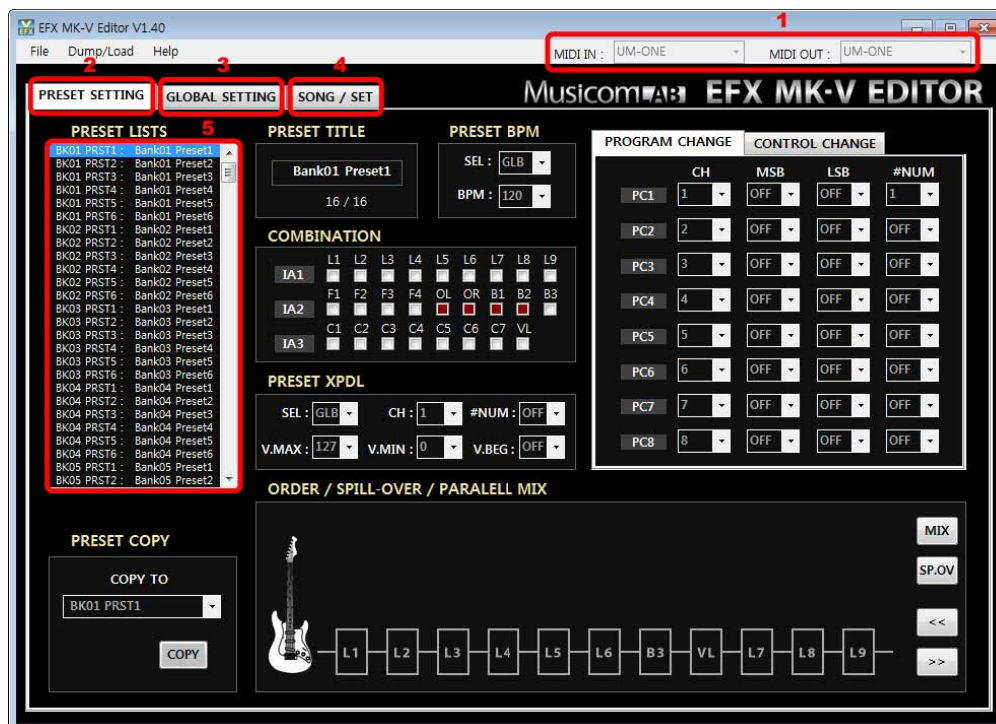
- Make sure to install the latest drivers for your MIDI interface before attempting to start the EFX MK-V Editor.
- Our recommended MIDI interfaces are the **Roland UM-ONE** and **M-Audio USB UNO 1x1**.  
These MIDI interfaces are inexpensive and have been tested to be compatible with the EFX MK-V.

## Start the EFX MK-V Editor

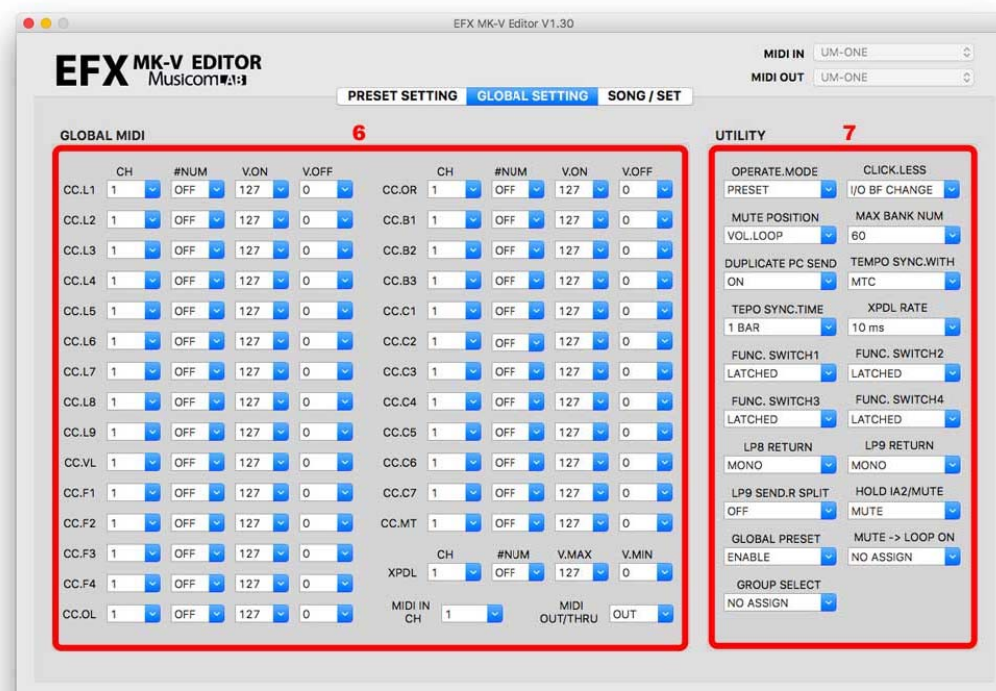
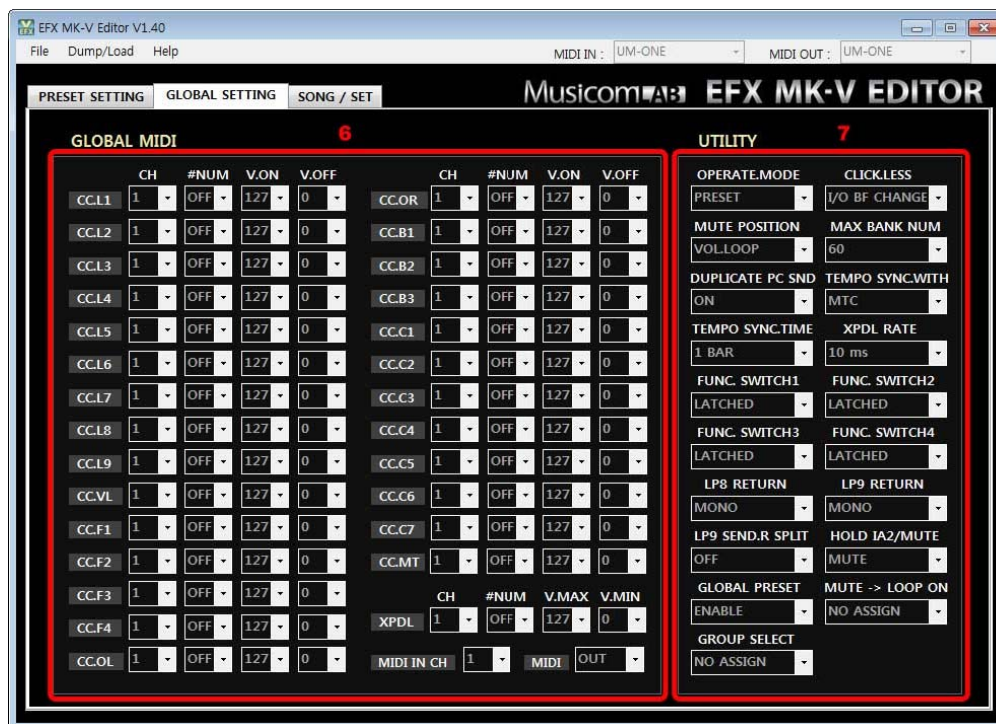
---

- Double-click **MK-V\_Editor\_V1xx.exe** file to start the editor
- Plug in power to the EFX MK-V
- The EFX MK-V must be on the **MIDI SYX DATA DUMP/LOAD** menu in the SETUP mode in order to work with the Editor.  
Follow the procedure below.
  1. To enter the SETUP Mode, press and hold the **IA1/SETUP** switch for 2 second.
  2. To enter the UTILITY Menu, press the 6 (UTILITY) switch.
  3. To move the MIDI SYX DATA DUMP/LOAD menu, Press the 1 or 2 switch until '**MIDI SYX DATA DUMP/LOAD**' is shown on the LCD display.

## Screen Description

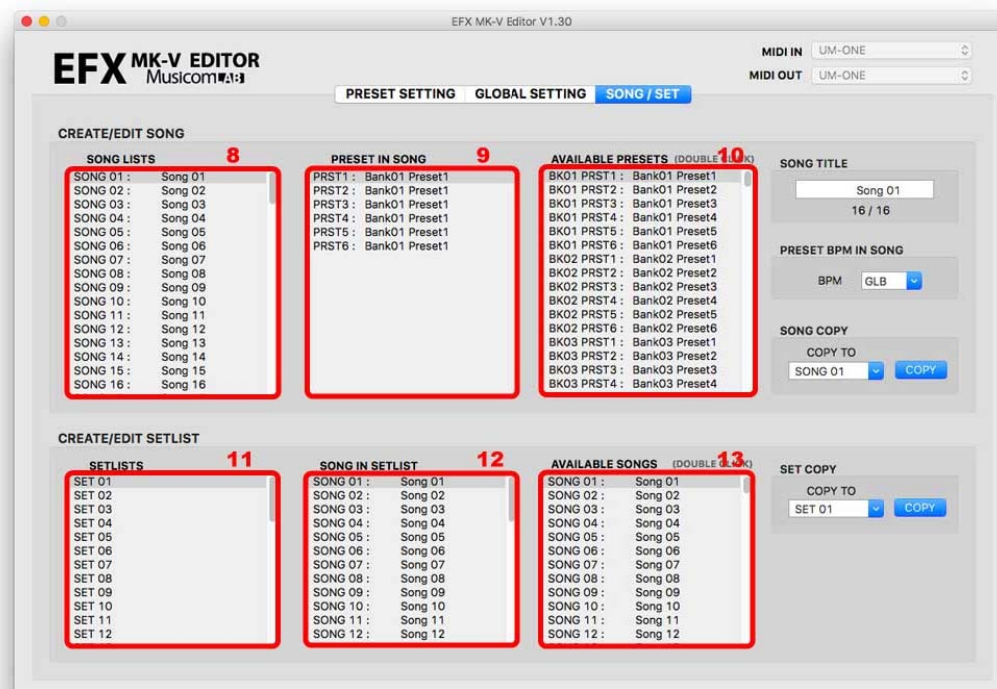
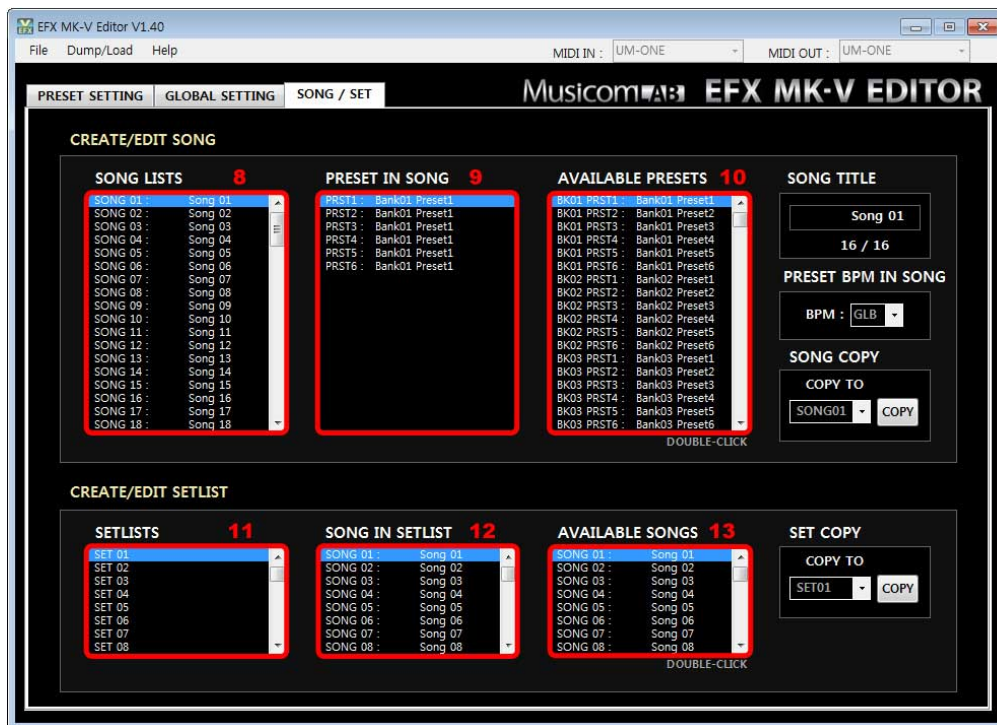


1. MIDI IN/OUT DEVICE SELECTOR – Select the your MIDI interface's MIDI IN & OUT
2. PRESET SETTING MENU
3. GLOBAL SETTING MENU
4. SONG/SET MENU
5. PRESET LISTS – Select a preset that you want to edit.



6. GLOBAL MIDI MENU

7. UTILITY MENU



8. **SONG LISTS** – Select a song that you want to edit.
9. **PRESET IN SONG** – Select a preset in the song that you want to edit.
10. **AVAILABLE PRESETS** – Select a original preset to be used in the song by double-click.
11. **SETLISTS** – Select a setlist that you want to edit.
12. **SONG IN SET** – Select a song in the setlist that you want to edit.
13. **AVAILABLE SONGS** – Select a original song to be used in the setlist by double-click.

## Load Data from EFX MK-V

---

- Choose **Dump/Load** -> **Load (From EFX MK-V)**
- The EFX MK-V must be on the **MIDI SYX DATA DUMP/LOAD** menu in the SETUP mode

## Dump Data to EFX MK-V

---

- Choose **Dump/Load** -> **Dump (To EFX MK-V)**
- The EFX MK-V must be on the **MIDI SYX DATA DUMP/LOAD** menu in the SETUP mode

## Firmware Update

---

- Download and Unpack the new firmware Zip file.  
<http://www.musicomlab.com/efxmk-v.htm>
- Plug in power while holding the **BANK▼** and **BANK▲** switches down. The LCD display will show 'Firmware Update!'
- Choose **File** -> **Firmware Update** to open the new firmware file (mkv\_vxxx\_app.syx).
- Click 'UPDATE' button.
- All LEDs above the switches blink while the new firmware is loading.  
This updating process requires about **four minutes**.
- The EFX MK-V automatically restarts when the update is complete.